



Theater Sound System

Board: Allen and Heath GL 2400. 24 channel, 4 group, 6 aux, LR mix, dual function live sound console. Includes 7x4 matrix and aux-fed subs capability.

Audio Matrix: Symnet 8x8 DSP. The 8x8 DSP is open architecture, digital audio processor hardware / software for routing and processing audio.

Main Cluster Speakers 4- EAV VR 21, 2-way with 12" inch woofer and 2-EV SB-122, compact 400 watt 12 inch subwoofer.

Satellite Speakers 6-EAV VR 21, 2-way with 12" woofer.

Monitors: 2 powered monitor channels with 4-EV Sx 300 Speakers, 300-watt, 12-inch two-way. 1-Sure DFR 11 digital EQ and Feedback Reducer per channel.

Foldback Speaker: EAV VR 21, 2-way with 12" inch woofer

Amplifiers: Crest Audio CKi Series.

CD Player: Newmark CDMix2 Duel Player.

Effects: Alesis Midiverb 4

Microphone Equipment:

10 Sennheiser E-835, Wired, cardioid, Vocal.

3 Sennheiser EW 300-835 G2 wireless handheld.

3 Sennheiser EW 500-935 G3 wireless handheld.

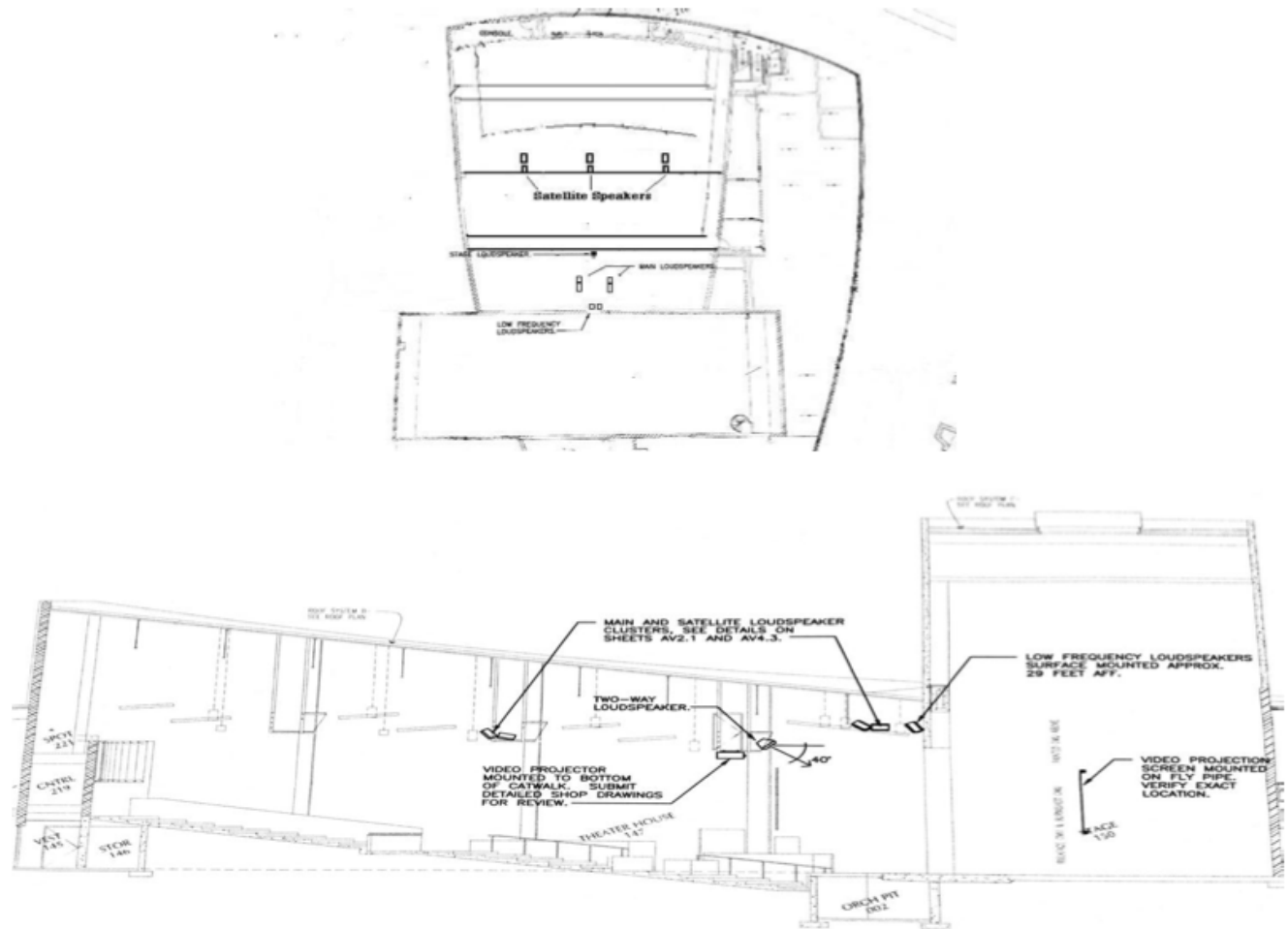
6 Sennheiser EW 300 Receivers

6 Sennheiser EW 600 Receivers.

9 Sennheiser bodypack transmitters.

12- Beyerdynamic Boom Mic Stands

Additional: 2- JBL Eon powered speakers on stands



Sound Plot

Box Locations and Circuits

SR Back Wall
 M13 M14
 L 1 L2
 Mon 1 Mon 2

SR Proscenium
 M5, M6,
 ICA, ICB
 Mon 1 Mon 2

SR Orchestra Pit
 Pit
 MA 1 MA 2
 M1 M2
 Mon 1 Mon 2

(Opening in pit lid for access)

SL Back Wall
 M15 M16
 L 3 L4
 Mon 1 Mon 2

SL Proscenium
 M7 M8
 ICA ICB
 Mon 1 Mon 2

SL Orchestra
 MA 3 MA 4
 M3 M 4
 Mon 1 Mon 2

Notes:

Typically events with complex system requirements hire a production company. Most of these vendors prefer to set their board and racks in the house crossover isle and stack or fly speakers on stage. Typically the house system is used to supplement the system brought in.

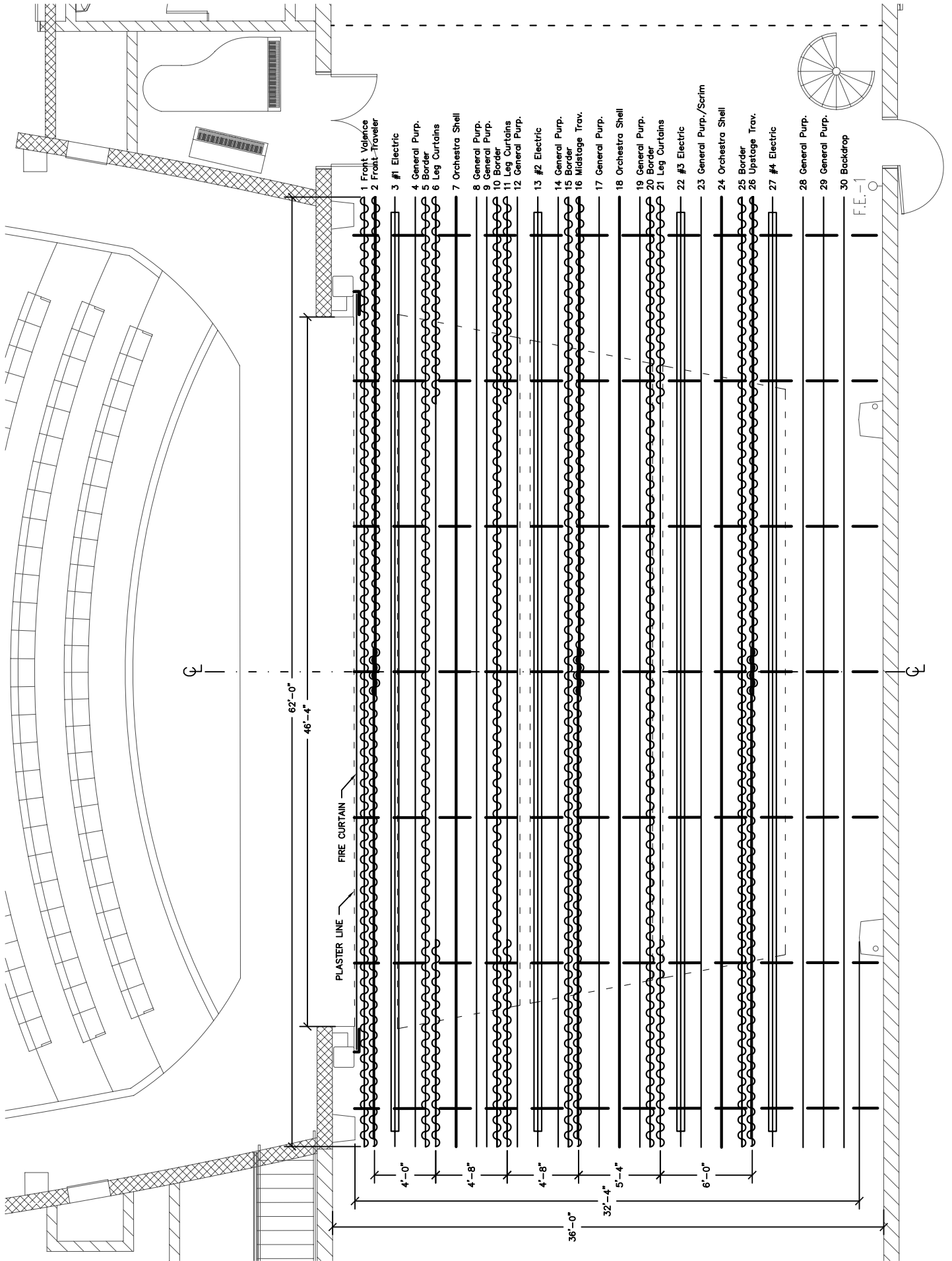
We have produced several shows with limited inputs by adding extra speakers on stage.

The system is has a preset EQ, and compression in the digital matrix.

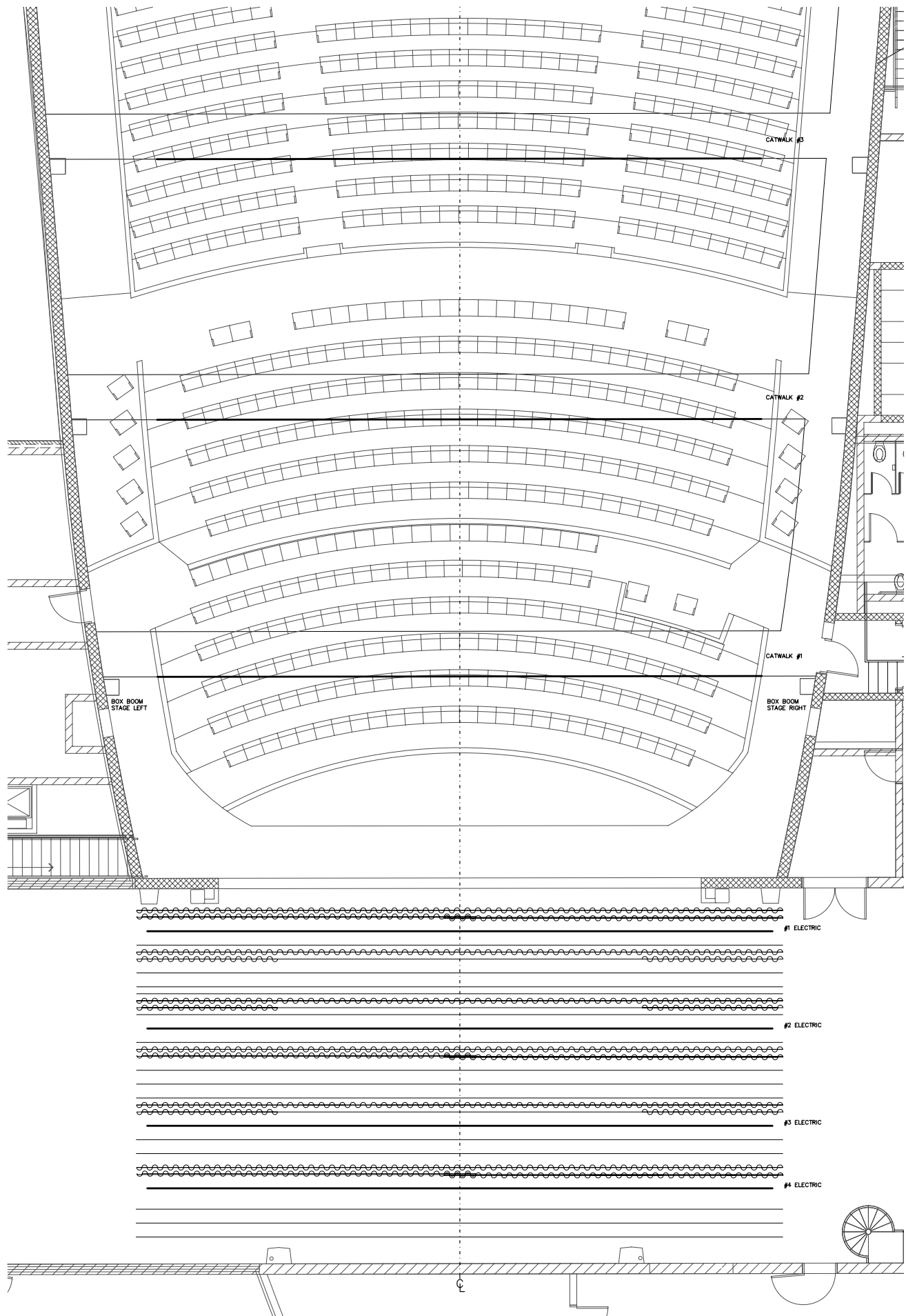
16 channel input from the stage and 2 monitor channels with 4 speakers. The JBL Eon speakers can be used as additional monitors or as front fill.

The house has wooden “clouds” that reflect the sound from the ceiling to the back of the house.

RIGGING PLAN



LIGHTING PLAN





Lighting Inventory

12- ETC S4 50 degree

36-ETC S4 36 degree

20-ETC S4 26 degree

12-ETC S4 19 degree

36-ETC S4 Par with lenses

30-6" Fresnel

6- Triple Cyc Light

9- Single flood Work lights

2- Strong Canto 700 Follow Spots.

Several top hats, barn doors

ETC Express 24/28 lighting console.

ETC Emphasis System Server.

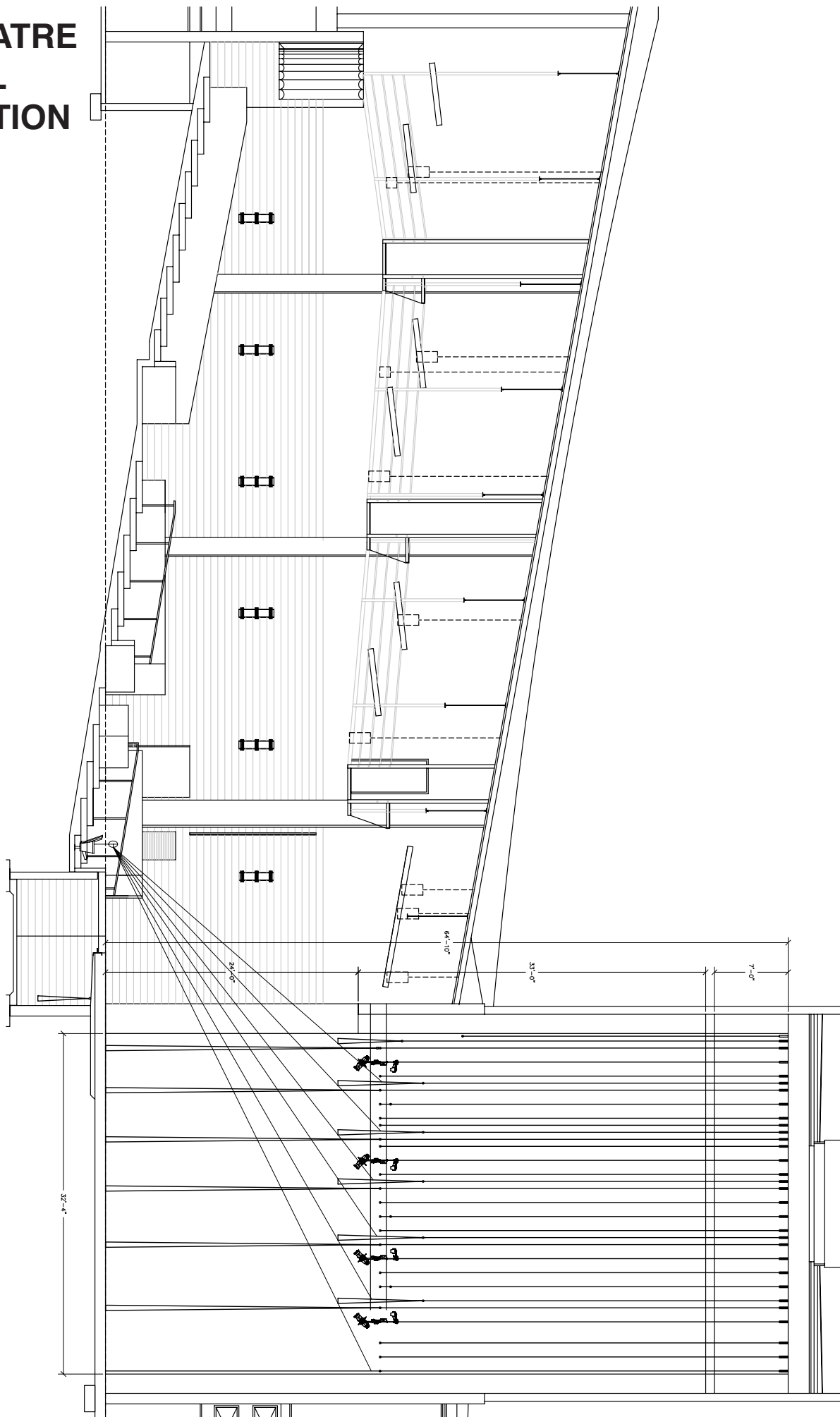
ETCNet2 Dmx Nodes located Stage Left Wall, Stage Left Stage Manager's Cabinet and, Lighting Booth.

2-Portable Dmx Nodes.

Dmx 512 outlets located in Catwalks and Pinrails.

10 -Chauvet Colorado Batten 72 tour

THEATRE FULL SECTION



Stage Measurements

Proscenium Width	46'-4"
Proscenium Height	24'-0"
Centerline to Stage Right Fly Rail	46'-4"
Centerline to Stage Left Wall	51'-0"
Proscenium to Stage Edge	10'-5"
Curtain Line to Stage Edge	16'-7"
Curtain Line to Upstage Wall	33'-8"
Curtain Line to Orchestra Pit Edge	8'-6"
Stage to First row Seating Floor	2'-11"
Orchestra Pit Depth	8'-6"
Stage Floor to SR Pin Rail Deck	29'-4"
Stage Floor to SR Pin Rail Top	32'-6"
Stage Floor to SL Pin Rail Deck	36'-0"
Stage Floor to SL Pin Rail Top	39'-6"
Stage Floor to Fly Rail Deck	57'-10"
Movie Screen	12'-0" tall x 16'-0 wide
Stage Overhead Door	12'-0" wide x 15'-5" tall
Loading dock Door	8'-0" Wide x 10'-2" tall

FULL STAGE PLAN

